

# CUSTOM RUBBER STAMPS



WE ARE THE COMPLETE SOURCE FOR ALL OF YOUR  
MARKING & IDENTIFICATION PRODUCTS

# INTRODUCING TRODAT'S NEW PROFESSIONAL™ 4.0 **STRONGER. CLEANER. FASTER.**



The new Trodat Professional 4.0 is just the right stamp for professional applications: Its sophisticated technology, coupled with cushioning elements on the handle and on the feet, as well as the optimized text plate guide, guarantee a unique, solid punch and a perfect imprint quality. Print like a professional!

## **HIGH-QUALITY STAINLESS STEEL**

1. Solid Metal Design made of brushed stainless steel for maximum stability & durability.

## **FAST & CLEAN DATE SETTING**

- 2. Special grip zones on the feet
- 3. Slim stamp design
- 4. Wider date wheels with new date band drive mechanism

## **CLEANER & EASIER INK CARTRIDGE REPLACEMENT**

- 5. New finger guard guarantees clean fingers when changing the ink cartridge & setting the date
- 6. Non-slip double grips allow optimal grip
- 7. Optimized guide & locking system ensures easy ink cartridge replacement

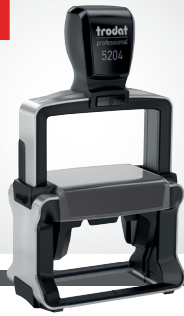
## **SUPERIOR ERGONOMICS**

- 8. Ergonomic handle
- 9. Cushioning elements on handle and on feet reduce stamp vibrations
- 10. Size & weight minimized

## **PERFECT IMPRINT QUALITY**

- 11. Optimized text plate guide ensures round, consistent stamp movement and perfect imprint quality

**ALL NEW**



**TROTAT**  
ECO FRIENDLY  
CO<sub>2</sub> min\*

# PROFESSIONAL™ 4.0 | SELF-INKING TEXT STAMPS

- High Quality Stainless Steel
- Modern, ergonomic design
- Standard with black ink pad
- Other color ink pads are available
- Stamps are Climate-Neutral

## Southwest Realtor Association

Santa Fe, NM 34543  
984-555-2345  
www.NMreal.com

5200 1" x 1-5/8"  
Replacement ink pad #6/50

**Emerald Finance, Inc.**  
*Regional Office*  
234 American Way  
New Your, NY 17021  
(800) 555-1245

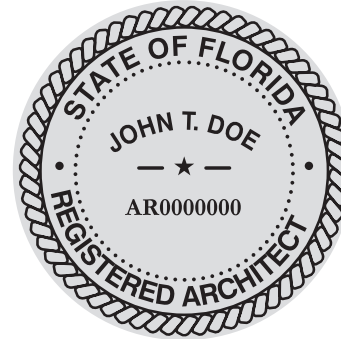
5203 1-1/8" x 2"  
Replacement ink pad #6/53

**CLASSIC EDITION**  
PAY TO THE ORDER OF  
LOCAL BANK & TRUST  
**FOR DEPOSIT ONLY**  
ACCT# 1234-456-789

5204 1" x 2-3/8"  
Replacement ink pad #6/56

**Peter Billington**  
**Notary Public**  
5493 South Hampton St.  
Ft. Worth, TX 74093

5206 1-5/16" x 2-1/4"  
Replacement ink pad #6/56



52045 1-3/4" Diameter  
Replacement ink pad #6/15

**CONTENTS  
FRAGILE  
HANDLE  
CAREFULLY**

5274 1-9/16" x 2-3/8"  
Replacement ink pad #6/58

Commercial Vehicle Division  
**USED FLEET AUTOS**  
1945 West Monroe Ave  
Philadelphia, PA 43256  
ph: (800) 555-2345 fax: (800) 555-4543



**Suzanne Carter**

5208 2" x 2-3/4"  
Replacement ink pad #6/58

**ALL NEW**



# PROFESSIONAL™ 4.0 | SELF-INKING DATE STAMPS

- Date, Date + Time, Numberers and Dial-a-Phrase Stamps
- Steel core for heavy, repeated stamping
- Minimum 10 year date band
- One color - standard with black ink pad
- Two color - standard with blue/red ink pad
- Stamps are Climate-Neutral

**RECEIVED**

**DEC 14 2028**

Check # \_\_\_\_\_

1" x 1-5/8"  
 5430 One Color Ink Pad  
 5430/2 Two Color Ink Pad  
 Replacement ink pad #6/50 One Color  
 Replacement ink pad #6/50/2 Two Color



1-3/4" Diameter  
 54045 One Color Ink Pad  
 54045/2 Two Color Ink Pad  
 Replacement ink pad #6/15 One Color  
 Replacement ink pad #6/15/2 Two Color

**PAST DUE**

**DEC 14 2028**

Payment received after this date will be considered in default, and account will be turned over to a collection agency.

1-9/16" x 2-3/8"  
 5474 One Color Ink Pad  
 5474/2 Two Color Ink Pad  
 Replacement ink pad #6/58 One Color  
 Replacement ink pad #6/58/2 Two Color

**SHIPPED**

**DEC 14 2028**

By: \_\_\_\_\_  
**FEDERAL AVIATION**

1-1/8" x 2"  
 5440 One Color Ink Pad  
 5440/2 Two Color Ink Pad  
 Replacement ink pad #6/53 One Color  
 Replacement ink pad #6/53/2 Two Color

**GREATER GREENSBORO PERISHABLE SERVICE**

**DEC 14 2028**

_____ JAN	_____ FEB	_____ MAR
_____ APR	_____ MAY	_____ JUN
_____ JUL	_____ AUG	_____ SEPT
_____ OCT	_____ NOV	_____ DEC

2" x 2-3/4"  
 5480 One Color Ink Pad  
 5480/2 Two Color Ink Pad  
 Replacement ink pad #6/58 One Color #6/58/2 Two Color

**PAY TO THE ORDER OF**  
Any Bank, Banker, or Trust Company  
All Prior Endorsements Guaranteed

**DEC 14 2028**

**FOR COLLECTION ONLY**  
First Bank of Buffalo  
Buffalo, New York

1-5/16" x 2-1/4"  
 5460 One Color Ink Pad  
 5460/2 Two Color Ink Pad  
 Replacement ink pad #6/56 One Color  
 Replacement ink pad #6/56/2 Two Color

**FAXED DEC 14 2028**

- Includes the following phrases:
- |                |              |
|----------------|--------------|
| 1. ANSWERED    | 7. CHECKED   |
| 2. Backordered | 8. DELIVERED |
| 3. CANCELLED   | 9. ENTERED   |
| 4. BILLED      | 10. PAID     |
| 5. RECEIVED    | 11. SHIPPED  |
| 6. CHARGED     | 12. FAXED    |

5117 Phrase Dater  
 Replacement ink pad #6/56

**1 2 3 4 5 6**

5546 6 Band Numberer  
 Replacement ink pad #6/50

**DEC 20 2028**

5030 Line Dater  
 Replacement ink pad #6/50



## PROFESSIONAL™ | SELF-INKING TEXT STAMPS

- Steel core for heavy, repeated stamping
- Modern, ergonomic design
- Standard with black ink pad
- Other color ink pads are available
- Stamps are Climate-Neutral

Commercial Vehicle Division

### USED FLEET AUTOS

1945 West Monroe Ave

Philadelphia, PA 43256

ph: (800) 555-2345 fax: (800) 555-4543

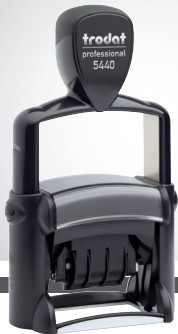


**Suzanne Carter**

5211 2-5/32" x 3-5/16"  
Replacement ink pad #6/511 Black



5205 1" x 2-3/4"  
Replacement ink pad #6/55



## PROFESSIONAL™ | SELF-INKING DATE STAMPS

- Date, Date + Time, Numberers and Dial-a-Phrase Stamps
- Steel core for heavy, repeated stamping
- Minimum 10 year date band
- One color - standard with black ink pad
- Two color - standard with blue/red ink pad
- Stamps are Climate-Neutral

East Brunswick Public Library

# PAST DUE

**DEC 14 2028**

Payment received after this date will  
be considered in default, and account  
be turned over to a collection agency.

2-5/32" x 3-5/16"  
54110 One Color Ink Pad  
54110/2 Two Color Ink Pad  
Replacement ink pad #6/511 One Color  
Replacement ink pad #6/511/2 Two Color



## PRINTY | SELF-INKING TEXT STAMPS

- Thousands of clear, quiet impressions
- Available in a variety of sizes
- Ink pad is built right into the stamp
- Ink pads available in several colors
- Stamps are Climate-Neutral



### FAXED

4910 3/8" x 1-1/32"

Replacement ink pad #6/4910

Mr. and Mrs. Peters  
1713 Bridge St.  
Mankato, MN 39878

4911 9/16" x 1-1/2"

Replacement ink pad #6/4911

Tom and Kathy Reynolds  
100 Park Blvd  
Streamwood, IL 60102  
(630) 555-1276

4912 3/4" x 1-7/8"

Replacement ink pad #6/4912

### STONEFIELD PRODUCTION

1495 Frisco Avenue  
Greenfield, MO 42543  
[sales@s-fieldprod.com](mailto:sales@s-fieldprod.com)  
[www.s-fieldprod.com](http://www.s-fieldprod.com)

4913 7/8" x 2-3/8"

Replacement ink pad #6/4913

### PAID IN FULL SMITH CHIROPRACTIC CENTER

5678 West Main st.  
Anytown, AZ 02345  
321-555-6543  
[www.smithchiropractic.com](http://www.smithchiropractic.com)

4914 1" x 2-1/2"

Replacement ink pad #6/4914

### PAID IN FULL SMITH CHIROPRACTIC CENTER

4917 3/8" x 2"

Replacement ink pad #6/4817



### Hattfield and Associates Business Consulting

1432 West Monroe Ave.  
New Orleans, LA 32403  
phone:(323) 555-HATT fax:(323) 555-2020  
[www.hatt-field.com](http://www.hatt-field.com)  
[help@hatt-field.com](mailto:help@hatt-field.com)

4915 1" x 2-3/4"

Replacement ink pad #6/4915

### Classic Edition, Inc. - Store

4916 3/8" x 2-3/4"

Replacement ink pad #6/4916

*William E. Peterson*

4918\* 5/8" x 3"

Replacement ink pad #6/4918

**THIS INVOICE IS PAST DUE**

Please remit payment today to  
avoid finance charges

4925 1" x 3-1/4"

Replacement ink pad #6/4925

Joe and Dan's  
**GREEN TEA EMPORIUM**  
FOR A GREAT HEALTH-DRINK GREEN TEA  
465 Cobblestone Way  
Palatine, IL 60101  
[www.gteahealth.com](http://www.gteahealth.com)  
[sales@gteahealth.com](mailto:sales@gteahealth.com)

4926 1-1/2" x 3"

Replacement ink pad #6/4926



## PRINTY | SELF-INKING TEXT STAMPS

- Thousands of clear, quiet impressions
- Available in a variety of sizes
- Ink pad is built right into the stamp
- Ink pads available in several colors
- Stamps are Climate-Neutral



**INSP  
47**

4921\* 1/2" x 1/2"  
Replacement ink pad #6/4921

**Dell's  
Hot Dog  
Club  
5 pts.**

4922\* 13/16" x 13/16"  
Replacement ink pad #6/4922

Pay to  
the order of  
**CLASSIC  
EDITION**

4923\* 1-3/16" x 1-3/16"  
Replacement ink pad #6/4923



4924\* 1-5/8" x 1-5/8"  
Replacement ink pad #6/4924



46045\* 1-3/4" diameter  
Replacement ink pad #6/46045

**JACK ANDERSON**

Managing Partner  
Anderson Consulting  
3457 Peabody Way  
Louisville, KY 54983  
email: consult@an-cons.com  
Internet: www.an-cons.com

4927 1-9/16" x 2-3/8"  
Replacement ink pad #6/4927

Richard Addlewood  
President, CEO  
**The Addlewood Companies**  
135 N. Main St.  
Lorraine, NY 12343  
www.addleco.com

4928 1-5/16" x 2-3/8"  
Replacement ink pad #6/4928

**APPROVED**

**MARC STEVENS  
FINANCIAL SERVICES**

Loan Department, 1st National Bank

**002-334-123435**

4929 1-3/8" x 2"  
Replacement ink pad #6/4929

**SHIP TO:**  
CLASSIC EDITION  
1234 WEST END DRIVE  
YOUR TOWN, STATE  
12345-1234

4931\* 1-1/8" x 2-3/4"  
Replacement ink pad #6/4931

\*Denotes stamp is not Climate-Neutral



# PRINTY | SELF-INKING TEXT STAMPS

- Date, Date + Text, Numberers and Dial-a-Phrase Stamps
- Minimum 10 years on the date band
- One color - standard with black ink pad
- Two color - standard with blue/red ink pad
- Other color ink pads are available
- Stamps are Climate-Neutral

**PAID IN FULL**

**DEC 14 2028**

**CLASSIC EDITION**  
Piscataway, New Jersey

1-9/16" x 2-3/8"

4727 One Color Ink Pad  
4727/2 Two Color Ink Pad  
Replacement ink pad #6/4927 One Color  
Replacement ink pad #6/4927/2 Two Color

**PAY TO THE ORDER OF**

Any Bank, Banker, or Trust Company  
All Prior Endorsements Guaranteed

**DEC 14 2028**

**FOR COLLECTION ONLY**  
First Bank of Buffalo, Est. 1849  
Buffalo, New York

1-1/8" x 2-3/4"

4731\* One Color Ink Pad  
Replacement ink pad #6/4931 One Color  
Replacement ink pad #6/4931/2 Two Color

**INSPECTION APPROVAL**

**DEC 14 2028**

**Inspector # 1268**  
**Chicago Plant # 812**

1-1/2" x 3"

4726 One Color Ink Pad  
Replacement ink pad #6/4926 One Color  
Replacement ink pad #6/4926/2 Two Color

**RECEIVED**

**AUG 28 2028**

3/16" x 1"

4850/L One Color Ink Pad  
4850/2 Two Color Ink Pad  
Replacement ink pad #6/4850 One Color  
Replacement ink pad #6/4850/2 Two Color

**INSPECTED AND  
READY FOR  
SHIPMENT**

**DEC 14 2028**

**Peterson  
Manufacturing**

1-5/8" x 1-5/8"

4724\* One Color Ink Pad  
Replacement ink pad #6/4924 One Color  
Replacement ink pad #6/4924/2 Two Color

**Deposit Paid**

**DEC 14 2028**

**JONES & SONS**

1" x 1-5/8"

4750 One Color Ink Pad  
4750/2 Two Color Ink Pad  
Replacement ink pad #6/4750 One Color  
Replacement ink pad #6/4750/2 Two Color

**BILLED AUG 28 2028**

**Includes the following phrases:**

- |                |               |
|----------------|---------------|
| 1. ANSWERED    | 7. CANCELLED  |
| 2. RECEIVED    | 8. CHECKED    |
| 3. ENTERED     | 9. SHIPPED    |
| 4. Backordered | 10. BILLED    |
| 5. CHARGED     | 11. DELIVERED |
| 6. PAID        | 12. FAXED     |

4817 Phrase Dater  
Replacement ink pad #6/4817

**PAID AUG 28 2028**

3/8" x 1"

4813 One Color Ink Pad  
Replacement ink pad #6/4817 One Color

**Preferred  
ORDER**

**DEC 14 2028**

**FILLED  
#435**

1-5/8" Diameter

46140\* One Color Ink Pad  
Replacement ink pad #6/46040 One Color  
Replacement ink pad #6/46040/2 Two Color

**Teller #408  
3<sup>rd</sup> National Bank**

**DEC 14 2028**

**University Branch  
Glendale, WV**

1-1/4" x 1-1/4"

43132\* One Color Ink Pad  
43132/2\* Two Color Ink Pad  
Replacement ink pad #6/43032 One Color  
Replacement ink pad #6/43032/2 Two Color

**DRAFT**

**Includes the following phrases:**

- |                 |              |
|-----------------|--------------|
| 1. ORIGINAL     | 7. URGENT!   |
| 2. FIRST CLASS  | 8. FAXED     |
| 3. CANCELLED    | 9. DRAFT     |
| 4. CONFIRMATION | 10. COPY     |
| 5. CONFIDENTIAL | 11. APPROVED |
| 6. AIR MAIL     | 12. PLEASE   |

4822 Phrase Stamp  
Replacement ink pad #6/4911

**DEC 14 2028**

4800 Line Dater  
Replacement ink pad #6/4911

**AUG 28 2028**

4810 Line Dater  
Replacement ink pad #6/4910

**DEC 14 2028**

4820 Line Dater  
Replacement ink pad #6/4911

**1 2 3 4 5 6**

4846 Line Numberer  
Replacement ink pad #6/4911

**1 2 3 4 5 6 7 8 9 0 1 2 3**

48313 Line Numberer  
Replacement ink pad #6/4817





## MAXLIGHT | PRE-INKED STAMPS

- Pre-Inked stamps contain the ink in the stamp plate and create crisp, clean impressions.
- MaxLight XL2 provides 4 times the impressions of other self-inking stamps
- Wide variety of sizes available including extra large text plates.

### FRED THOMPSON INC.

642 JACKSON LANE • BELOIT, WI 53523  
PH: 800-555-6262 • FAX: 800-555-6263

XL2-75 S-STYLE 9/16" x 1-11/16"

**FRAGILE**

**CONTENTS UNDER  
PRESSURE**

XL2-165 S-STYLE 1-5/8" x 2-5/8"

Mr. & Mrs. John Smith  
125 South Main St.  
Manchester, NH 03105

XL2-115 S-STYLE 13/16" x 2-1/16"

**FRAGILE**  
PLEASE HANDLE WITH CARE

XL2-720 1" x 4"

PAY ONLY TO THE  
ORDER OF  
FIRST BANK OF COLUMBUS  
**FOR DEPOSIT ONLY**  
EASTERN DATA SYSTEMS

XL2-125 S-STYLE 1-1/8" x 2-1/8"

**PAID** East Farmer's  
Market

XL2-185 S-STYLE 1-1/16" x 2-7/8"

**CONFIDENTIAL**

XL2-145 S-STYLE 3/4" x 2-9/16"

*Karen J. Williams*

XL2-265 11/16" x 3-5/16"

**Pro-Drug BR** (formin extended-release pills)

700 mg # \_\_\_\_\_ Quantity

\_\_\_\_\_ SSe evening meal

XL2-245 1-1/4" x 3-3/16"



# MAXLIGHT | PRE-INKED STAMPS

# PRIORITY ORDER

SHIP VIA

2ND DAY

OVERNIGHT

XL2-5050 2" x 2"

## FOR EMPLOYEE USE ONLY

Distribute this information to all department heads in accordance to the rules and regulations as written in the company handbook. Please read all information carefully. Sign and date the top copy and keep the white copy for future reference. Please return the pink copy to management as soon as possible.

XL2-750 1-1/2" x 4-3/4"

**HAPPY HOUNDS  
DOG GROOMING**

WEEKDAY HOURS 8AM-5PM / SAT 9AM-NOON  
CALL FOR PRICING - 800.555.1213  
[www.happyhoundsgrooming.com](http://www.happyhoundsgrooming.com)

XL2-225 2-1/16" x 3"

## ADDRESS INFORMATION CHANGE

NAME: \_\_\_\_\_

COMPANY: \_\_\_\_\_

NEW ADDRESS: \_\_\_\_\_

CITY: \_\_\_\_\_

STATE: \_\_\_\_\_ ZIP: \_\_\_\_\_

NEW PHONE #: \_\_\_\_\_

NEW FAX #: \_\_\_\_\_

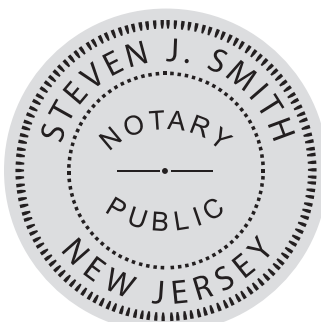
XL2-700 2-3/4" x 3-3/4"

OK  
SHIP TO  
SJS

XL2-305  
7/16" Round



XL2-495  
1-3/16" Round



XL2-535 S-STYLE  
1-11/16" Round



XL2-325  
5/8" Round



XL2-655 S-STYLE  
2-1/8" Round



## MAXLIGHT | PRE-INKED STAMPS

# PROPRIETARY INFORMATION

TO BE RETURNED TO:  
WEBSTER, RATHBONE & SOAMS  
AND NOT BE REPRODUCED IN ANY FORM  
WITHOUT THEIR PERMISSION

XL-275 S-STYLE 2" x 4"

# RETURN POLICY

15% RESTOCKING CHARGE APPLIES TO  
UN-OPENED BOXES

30% RESTOCKING CHARGE APPLIES TO  
OPENED BOXES

ALL RETURNS MUST BE ACCOMPANIED  
WITH A VALID RECEIPT.

XL-800 Z-STYLE 3-1/8" x 4-1/2"



## CLASSIC | DIE PLATE DATERS

- Die Plate, Line Daters, Numberers, Phrase, Time and Date Stamps, Stamp Pads
- Type band die-plate dater
- Minimum 10 year bands
- Separate stamp pad required!

**YOUR WARRANTY  
EXPIRES ON THIS DATE**

**DEC 14 2028**

*Please call to have your  
product serviced!*

2910/P01 1-3/16" x 2"

**Received**

**DEC 14 2028**

Order is COMPLETE  
 Order is INCOMPLETE

2910/P02 1-1/2" x 2"

**PAID**

**DEC 14 2028**

Branch 587 - Main St. Office  
FIRST FEDERAL  
SAVINGS AND LOAN

2910/P05 1-3/8" x 2-1/8"

**PAST DUE**

**DEC 14 2028**

ANY PAYMENT RECEIVED AFTER THE  
ABOVE DATE WILL BE TURNED OVER  
FOR COLLECTION.  
PLEASE REMIT IMMEDIATELY.

2910/P10 2" x 2-3/4"

**PAID**

**DEC 14 2028**

Includes the following phrases:

- |                |              |
|----------------|--------------|
| 1. ANSWERED    | 7. CHECKED   |
| 2. BACKORDERED | 8. DELIVERED |
| 3. CANCELLED   | 9. ENTERED   |
| 4. BILLED      | 10. PAID     |
| 5. RECEIVED    | 11. SHIPPED  |
| 6. CHARGED     | 12. FAXED    |

1117 Phrase Dater



2910/U12 2" Diameter



2910/U24 2" Diameter



2910/P30 2" Diameter

**DON'T FORGET YOUR STAMP PAD!**



9051 Ink Pad

Available in Black, Red, or Blue other colors may be available; call for details.

**DEC 14 2028**

1000 1/8" Characters

**DEC 14 2028**

1010 5/32" Characters

**DEC 14 2028**

1020 3/16" Characters

**1 2 3 4**

1544 Four Band Numberer

**1 2 3 4 5 6**

1596 Six Band Numberer



## SLIM STAMP | POCKET STAMPS

- Super compact design
- Uses 80% less plastic to start with
- 3 to 5 times the number of impressions of a traditional self-inker



**Marcus Ehrlich**  
Personal Accountant  
231 Main Street  
Anytown, USA 08700

SLIM STAMP 1444 E-STYLE  
11/16" x 1-15/16"

### STONEFIELD PRODUCTION CO.

1495 Frisco Avenue  
Greenfield, MO 42543  
[sales@s-fieldprodco.com](mailto:sales@s-fieldprodco.com)  
[www.s-fieldprodco.com](http://www.s-fieldprodco.com)

SLIM STAMP 1854 E-STYLE 7/8" x 2-3/8"

**Richard J. Addlewood**  
**The Addlewood Companies**  
135 North Main Street  
Lorraine, NY 12343  
[www.addleco.com](http://www.addleco.com)

SLIM STAMP 2264 E-STYLE 1" x 2-3/4"

**PAID IN FULL**  
**OK**  
**TO PROCESS**

SLIM STAMP 2773 E-STYLE 1-1/8" x 3"

From The Library Of  
**SARAH FIELD**

PLEASE RETURN TO:  
231 Main Street  
Anytown, USA 08700  
555-555-4545



SLIM STAMP 50R 2" Round

**PROPRIETARY**  
**INFORMATION**

TO BE RETURNED TO:  
WEBSTER, RATHBONE & SOAMS  
AND NOT BE REPRODUCED IN ANY FORM  
WITHOUT THEIR PERMISSION

SLIM STAMP 3679 E-STYLE 1-1/2" x 3-1/4"

SLIM STAMP 4141 E-STYLE  
1-3/4" x 1-3/4"



## SUPERSLIM | POCKET STAMPS

- Even slimmer compact design
- Uses 80% less plastic to start with
- 3 to 5 times the number of impressions of a traditional self-inker

Mr. & Mrs. Mark Bricston  
4600 Bridgeview Blvd.  
Hill Valley, CA 19812

SUPERSLIM 1442  
7/16" x 1-7/16"

**APPROVED**

Jacqueline M. Smith  
Department Manager

SUPERSLIM 2054 9/16" x 1-13/16"

MICHEAL BROOKSTONE  
**The Brookstone Companies**  
15 Madison St • Beloit, WI 60923  
[www.brookstoneco.com](http://www.brookstoneco.com)

SUPERSLIM 2564 7/8" x 2-3/8"

## POCKET PRINTY | WHENEVER. WHEREVER.

- The NEW Pocket Printy is the stamp you can carry everywhere.
- Just Slide and Stamp! It has an easy and intuitive one-handed slide mechanism.
- A Pocket Full of Clean, Crisp Impressions
- Clean, Intuitive Ink Pad Change



### CLASSIC EDITION

1234 West End Drive  
Your Town, State 12345-1234

#9511 Pocket Printy  
9/16" x 1-1/2"

Replacement ink pad #6/9511



### Robert Norman

Export Manager  
West Indies Shipping Inc.  
(800) 555-1256

#9512 Pocket Printy 3/4" x 1-7/8"

Replacement ink pad #6/512

### JUST SLIDE AND STAMP!



## SEALS AND EMBOSSERS |

The All New Ideal Seal has a clean, timeless design that embraces tradition, but shows a willingness to take a bold leap forward. Ergonomic shapes, and a multiuse base make it easy to use, regardless of hand size. It requires less pressure than our original model and indicates when you've applied the right amount of force to finish embossing.



1-5/8" Dia.



2" Dia.



1" x 2"

## CUSTOM ENGRAVING |

### NAME BADGES, DOOR, DESK & WALL SIGNS

These premium, fully customizable name badges and signage are available to give your business or office that polished, professional look. Choose from an assortment of sizes, materials and finishes to fit the look you want your clients to see.

#### NAME BADGES



Magnet

Name badges are available with your choice of fasteners.



Traditional Pin



Military Clasp



Bulldog Swivel

#### DOOR SIGNS



#### DESK SIGNS



#### WALL SIGNS



# ORDER FORM


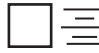
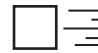
## BILLING INFORMATION

Company: \_\_\_\_\_  
 Person Ordering: \_\_\_\_\_  
 Address: \_\_\_\_\_  
 City: \_\_\_\_\_ State: \_\_\_\_\_ Zip: \_\_\_\_\_  
 Phone: \_\_\_\_\_  
 E-Mail: \_\_\_\_\_  
 P.O.#: \_\_\_\_\_

## SHIPPING INFORMATION

Check here if same as Billing Information

Company: \_\_\_\_\_  
 Attn: \_\_\_\_\_  
 Address: \_\_\_\_\_  
 \_\_\_\_\_  
 City: \_\_\_\_\_ State: \_\_\_\_\_ Zip: \_\_\_\_\_

PROD#	LAYOUT				REFILL INK					
	Left <input type="checkbox"/> 	Center <input type="checkbox"/> 	Right <input type="checkbox"/> 	Other <input type="checkbox"/> Please attach instructions	Size	Black	Blue	Green	Red	Violet
					1 oz Bottle					
QTY.	INK COLOR									
	<input type="checkbox"/> Black	<input type="checkbox"/> Blue	<input type="checkbox"/> Violet	<input type="checkbox"/> Red	<input type="checkbox"/> Green	2 oz Bottle				

TYPE CODE	ALL CAPS	UPPER / LOWER	COPY		
_____	_____	_____	_____	_____	_____
_____	_____	_____	_____	_____	_____
_____	_____	_____	_____	_____	_____
_____	_____	_____	_____	_____	_____
_____	_____	_____	_____	_____	_____
_____	_____	_____	_____	_____	_____
_____	_____	_____	_____	_____	_____
_____	_____	_____	_____	_____	_____

**SPECIAL INSTRUCTIONS**

\_\_\_\_\_

\_\_\_\_\_

\_\_\_\_\_

TYPESTYLES					
TYPE CODE	TYPESTYLE NAME	TYPE CODE	TYPESTYLE NAME	TYPE CODE	TYPESTYLE NAME
A	ARIAL	AN	ARIAL NARROW	TM	TIMES
AR-I	<i>ARIAL ITALIC</i>	AN-I	<i>ARIAL NARROW ITALIC</i>	TM-I	<i>TIMES ITALIC</i>
AR-B	<b>ARIAL BOLD</b>	AN-B	<b>ARIAL NARROW BOLD</b>	TM-B	<b>TIMES BOLD</b>
AR-BI	<b><i>ARIAL BOLD ITALIC</i></b>	AN-BI	<b><i>ARIAL NARROW BOLD ITALIC</i></b>	TM-BI	<b><i>TIMES BOLD ITALIC</i></b>